

Project Name: SCEAM - Soil Condition Evaluation & Monitoring Project, Tasmania
 Project Code: SCEAM Site ID: S31 Observation ID: 1
 Agency Name: TAS Department of Primary Industries and Water

Site Information

Desc. By: R. Moreton
 Date Desc.: 12/12/05
 Map Ref.:
 Northing/Long.:
 Easting/Lat.:
 Locality: Richmond
 Elevation: 91 metres
 Rainfall: 523
 Runoff: Rapid
 Drainage: Well drained

Geology

Exposure Type: Soil pit
 Geol. Ref.: Jurassic Dolerite
 Conf. Sub. is Parent. Mat.: Probable
 Substrate Material: Clay

Land Form

Rel/Slope Class: Rolling hills 90-300m 10-32%
 Morph. Type: Mid-slope
 Elem. Type: Hillslope
 Slope: 10 %
 Pattern Type: Hills
 Relief: No Data
 Slope Category: Gently inclined
 Aspect: 70 degrees

Surface Soil Condition (dry): Firm

Erosion: No Data

Soil Classification

Australian Soil Classification:
 Haplic Eutrophic Grey Dermosol Medium Non-gravelly
 Clay-loamy Clayey Moderately deep

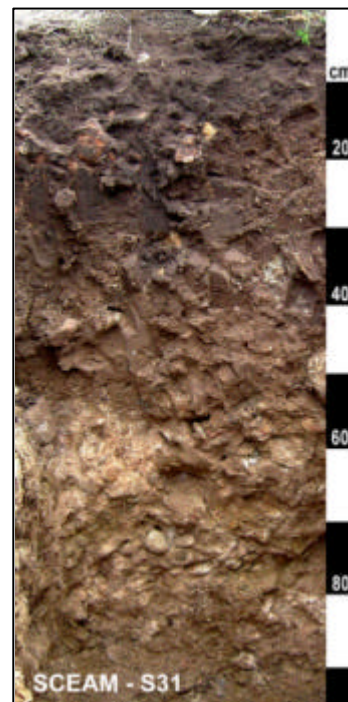
ASC Confidence:

All necessary analytical data are available.

Site Disturbance: Extensive clearing

Vegetation:

Surface Coarse Fragments: 0-2%, medium gravelly, 6-20mm



Profile Morphology

A1p	0 - 0.12 m	Black (10YR2/1-Moist); Mottles, 0-2%, 5-15mm, Faint, 10YR3/4; Fine sandy clay loam; Moderate grade of structure, 20-50 mm, Platy; Rough-ped fabric; Fine, (0 - 5) mm crack; Few (<1 per 100mm2) Fine (1-2mm) macropores, Dry; Weak consistence; Slightly plastic; Normal plasticity; Slightly sticky; 0-2%, coarse gravelly, 20-60mm, subangular, dispersed, Dolerite, coarse fragments; Few, very fine (0-1mm) roots; Abrupt, Smooth change to -
B1t	0.12 - 0.3 m	Black (10YR2/1-Moist); Mottles, 0-2%, 15-30mm, Faint, 10YR4/3; Clay loam; Weak grade of structure, 50-100 mm, Angular blocky; Rough-ped fabric; Medium, (5 - 10) mm crack; Moderately moist; Firm consistence; Moderately plastic; Normal plasticity; Moderately sticky; 10-20%, coarse gravelly, 20-60mm, subangular, dispersed, Dolerite, coarse fragments; Few, very fine (0-1mm) roots; Gradual, Smooth change to -
B2t	0.3 - 0.5 m	Dark greyish brown (10YR4/2-Moist); Mottles, 0-2%, 15-30mm, Distinct, 10YR4/3; Medium clay (Light); Moderate grade of structure, 20-50 mm, Angular blocky; Rough-ped fabric; Moderately moist; Firm consistence; Very plastic; Normal plasticity; Moderately sticky; 2-10%, cobbly, 60-200mm, subangular, dispersed, Dolerite, coarse fragments; Clear, Irregular change to -
C	0.5 - 0.98 m	Greyish brown (2.5Y5/3-Moist); Substrate influence, 10-20%, 5-15mm, Prominent, 7.5YR5/6; Light clay; Massive grade of structure; Moderately moist; Slightly plastic; Normal plasticity; Moderately sticky; 10-20%, coarse gravelly, 20-60mm, subrounded, dispersed, Dolerite, coarse fragments;

Chemistry Data

31

			Organic C%	pH (H2O)	pH (CaCl2)	EC (dS/m)	Exchangeable Bases (meq/100g)				ECEC (meq/100g)	ESP %	Olsen P (mg/kg)	Total N %	Colwell_K (mg/kg)
							Ca	Mg	Na	K					
0	to	75 mm	3.11	6.1	5.0	0.06	9.35	7.07	0.43	0.84	17.89	2.40	23.00	0.21	324
150	to	225 mm	0.97	6.7	5.5	0.05	10.13	13.59	0.90	0.41	25.12	3.58	7.50	0.06	149
300	to	500 mm	0.54	8.1	7.3	0.20	16.79	24.93	1.75	0.47	43.97	3.98	1.70	0.07	129
500	to	800 mm	0.24	8.8	7.9	0.28	14.12	21.84	2.46	0.55	38.97	6.31	1.00	0.03	200
800	to	980 mm	0.27	8.8	7.9	0.34	14.63	20.70	2.36	0.55	38.24	6.17	1.50	0.05	204